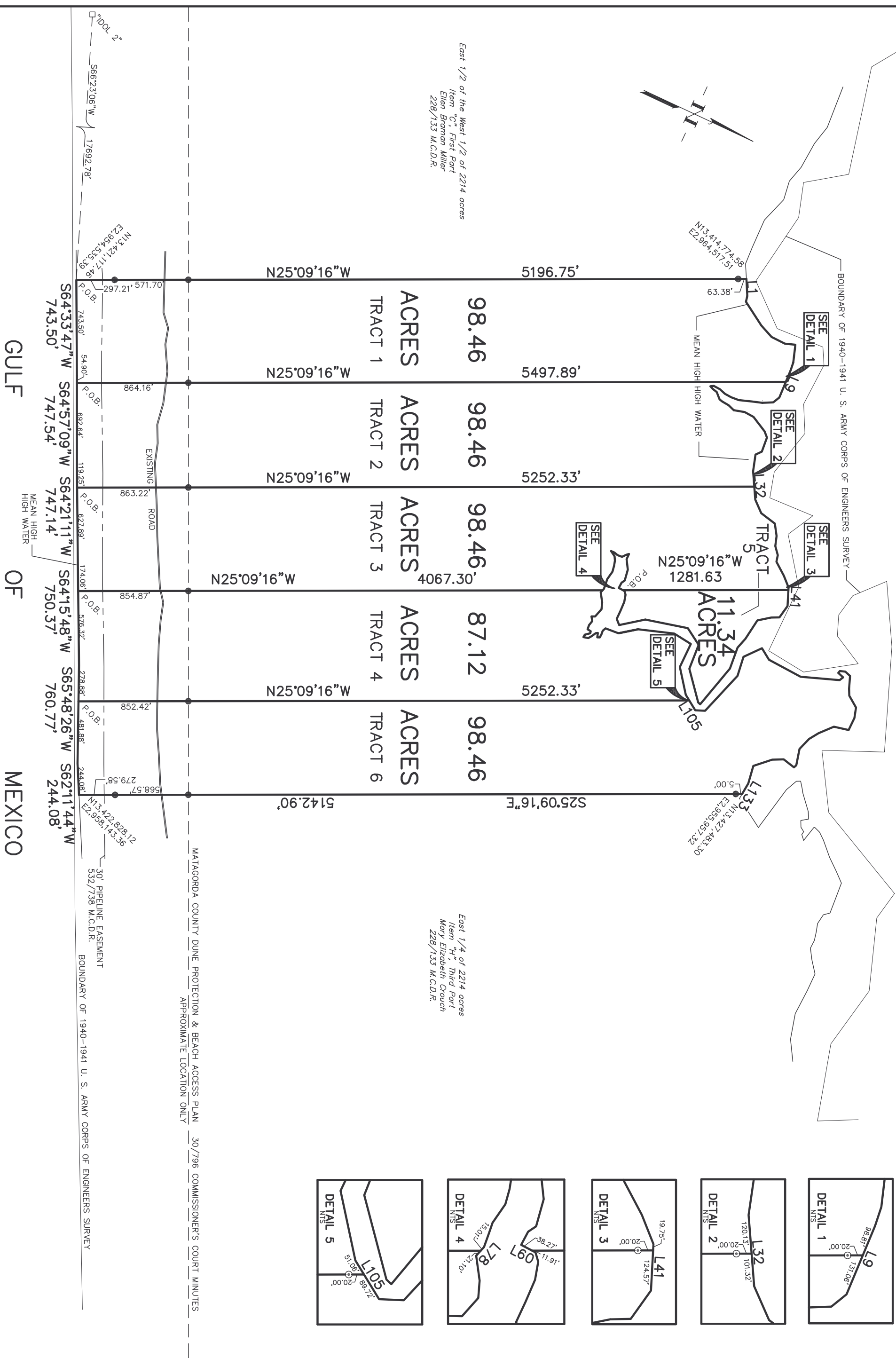


EAST MATAGORDA BAY



492.37 ACRE PARTITION SURVEY
SAMUEL LOVE LEAGUE
ABSTRACT NO. 59
MATAGORDA COUNTY, TEXAS

BEING THE SAME PROPERTY DESCRIBED AS 492.37 ACRES IN SPECIAL WARRANTY DEED DATED APRIL 20, 2012 FROM JOHN C. DICKERSON, III, DEPENDENT ADMINISTRATOR OF THE ESTATE OF HARRY GRAVES BURKHART, III, TO EXECUTIVE DECISIONS, LLC, RECORDED IN FILE NO. 122342 OF THE OFFICIAL RECORDS OF MATAGORDA COUNTY, TEXAS.

- LEGEND**
- SET 3/8" IRON ROD WITH PLASTIC CAP
 - SET 1/2" IRON ROD WITH PLASTIC CAP
 - M.C.R. MATAGORDA COUNTY DEED RECORDS
 - P.O.B. MATAGORDA COUNTY OFFICIAL RECORDS
 - [] POINT OF BEGINNING PLAT OR DEED CALL

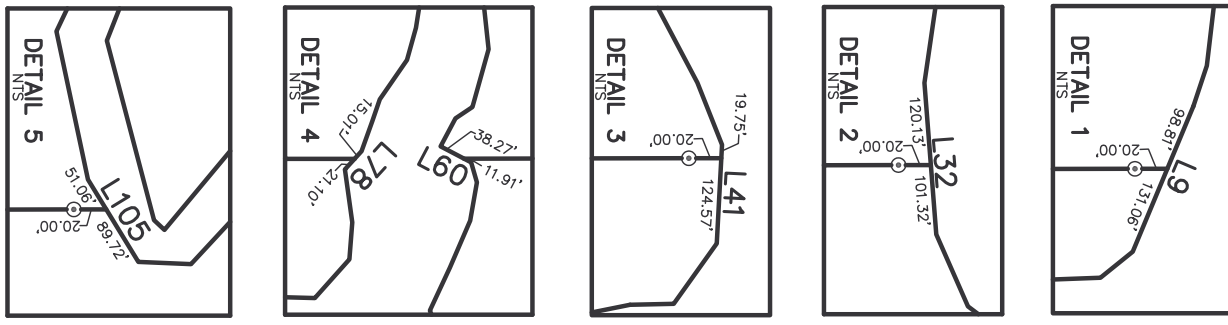
NOTES: DISTANCES, BEARINGS AND COORDINATES SHOWN HEREON ARE TEXAS STATE PLANE SOUTH CENTRAL ZONE NAD83 GRID, BASED ON U. S. C. & G. S. MONUMENT IDOL 2 (N13°44'02.83" S, E23°58'52.42" E). TO CONVERT DISTANCES FROM GRID TO SURFACE MULTIPLY BY A COMBINED SCALE FACTOR OF 1.00005115. GRID ACRES = 492.32.

THE EAST AND WEST BOUNDARIES OF THIS TRACT WERE ESTABLISHED BY DIVIDING THE 1940-1941 U. S. ARMY CORPS OF ENGINEERS SURVEY OF TRACT 3 CONTAINING 2111.4 ACRES (CIVIL ACTION NO. 102, DISTRICT COURT OF THE UNITED STATES, SOUTHERN DISTRICT OF TEXAS, GALVESTON DIVISION) INTO FOUR EQUAL AREA PORTIONS.

THE NORTH AND SOUTH WATER BOUNDARIES ARE MEAN HIGH HIGH WATER BASED ON AN ELEVATION OF 0.6 FEET NAVD08.

G & W ENGINEERS, INC.
REGISTERED PROFESSIONAL
LAND SURVEYOR NO. 50888

L. HENRY A. DAVYSH, REGISTERED PROFESSIONAL LAND SURVEYOR, DO HEREBY CERTIFY THAT THE PLAT SHOWN HEREON AND A FIELDNOTE DESCRIPTION PREPARED REPRESENTS THE RESULT OF A SURVEY MADE ON THE GROUND UNDER MY DIRECTION ON MARCH 27, 2012.



MEANDERS ALONG THE MEAN HIGH HIGH WATER OF EAST MATAGORDA BAY					
LINE	BEARING	DISTANCE	LINE	BEARING	DISTANCE
L1	N61°43'42"E	131.10'	L68	S04°11'18"E	37.23'
L2	N77°44'33"E	47.13'	L69	S14°50'17"W	31.86'
L3	N32°07'23"E	218.85'	L70	S01°47'29"E	29.00'
L4	N22°55'52"E	119.86'	L71	N30°25'41"E	48.32'
L5	N01°47'00"E	115.51'	L72	N60°05'05"E	34.51'
L6	N19°17'52"W	81.36'	L73	N74°03'55"E	39.59'
L7	N71°40'37"E	138.37'	L74	N80°22'06"E	48.72'
L8	N83°09'40"E	62.21'	L75	S80°17'58"E	69.88'
L9	N87°34'48"E	229.87'	L76	N83°50'03"E	33.73'
L10	S63°56'20"E	60.55'	L77	N84°24'12"E	46.44'
L11	S27°44'20"E	85.18'	L78	S72°29'06"E	36.11'
L12	S17°46'33"E	82.78'	L79	N56°52'52"E	77.91'
L13	S19°03'44"E	100.37'	L80	N69°27'23"E	54.20'
L14	S04°31'05"E	63.37'	L81	S73°18'41"E	75.69'
L15	S03°33'29"W	55.33'	L82	S23°19'19"E	27.83'
L16	S17°21'55"W	52.74'	L83	N55°24'43"E	37.03'
L17	S03°22'06"W	53.58'	L84	S76°19'07"E	39.47'
L18	S30°35'42"E	26.80'	L85	N85°10'22"E	35.04'
L19	N21°48'54"E	31.06'	L86	N05°44'0"E	28.65'
L20	N13°09'21"E	35.59'	L87	N77°40'10"E	16.11'
L21	N43°26'59"E	61.22'	L88	S39°59'24"E	43.61'
L22	N14°02'40"E	26.88'	L89	S84°48'33"E	21.73'
L23	N05°06'06"E	56.43'	L90	N14°02'44"W	38.50'
L24	N19°06'05"E	55.87'	L91	N54°22'43"W	32.06'
L25	N15°29'51"W	85.99'	L92	N61°27'50"W	38.06'
L26	N03°39'27"E	78.16'	L93	N29°45'46"W	15.85'
L27	N27°34'27"E	141.52'	L94	N72°36'30"E	34.52'
L28	N43°56'11"E	51.38'	L95	N23°23'54"W	19.81'
L29	N84°59'31"E	116.01'	L96	N87°23'28"W	27.69'
L30	S49°51'03"E	53.98'	L97	S84°12'44"W	28.34'
L31	N73°15'56"E	130.14'	L98	N65°10'13"W	29.32'
L32	N60°26'30"E	221.45'	L99	N04°21'51"W	107.18'
L33	N41°17'04"E	114.77'	L100	N36°21'11"W	155.44'
L34	N12°10'02"E	132.43'	L101	N18°19'09"W	281.84'
L35	N56°52'59"E	97.43'	L102	N06°44'10"E	151.95'
L36	N72°13'28"E	78.41'	L103	S89°30'34"E	197.97'
L37	N49°50'36"E	73.37'	L104	N52°56'25"E	221.05'
L38	N76°28'22"E	51.96'	L105	N33°24'15"E	140.78'
L39	N37°02'11"E	123.49'	L106	N22°33'38"W	76.76'
L40	N43°19'56"E	97.21'	L107	N72°13'20"W	369.11'
L41	N67°57'04"E	144.32'	L108	S82°27'36"W	154.45'
L42	S79°31'53"E	108.03'	L109	N50°05'22"W	158.27'
L43	S26°14'38"E	63.73'	L110	N33°34'33"E	104.57'
L44	S36°31'48"E	109.33'	L111	N03°16'19"E	278.40'
L45	S82°05'11"E	170.25'	L112	N20°10'48"W	303.44'
L46	S73°18'26"E	91.89'	L113	N62°36'37"W	34.98'
L47	N84°56'18"E	172.38'	L114	S16°56'24"W	51.18'
L48	S75°16'32"E	361.02'	L115	N75°53'07"W	19.14'
L49	S17°39'16"W	20.75'	L116	N18°38'56"W	42.76'
L50	S50°12'41"W	270.71'	L117	N17°35'42"E	49.86'
L51	S86°19'43"W	198.69'	L118	N69°06'29"E	98.27'
L52	S31°51'58"W	154.68'	L119	N63°19'28"E	54.99'
L53	S13°41'19"E	335.99'	L120	N35°21'25"E	105.07'
L54	S36°55'08"E	207.07'	L121	N73°18'30"E	81.75'
L55	S43°17'53"W	51.92'	L122	S89°08'37"E	103.78'
L56	N90°00'00"W	68.98'	L123	S12°34'24"E	116.68'
L57	S88°15'09"W	74.71'	L124	S47°55'22"E	128.78'
L58	S74°51'21"W	56.70'	L125	S56°05'29"E	85.77'
L59	S48°49'54"W	30.29'	L126	S71°06'56"E	107.68'
L60	S02°36'18"W	50.18'	L127	N75°57'12"E	129.84'
L61	N87°10'30"W	46.23'	L128	S65°54'32"E	23.76'
L62	N59°03'09"W	29.91'	L129	S12°49'36"W	101.02'
L63	S80°33'06"W	87.43'	L130	S26°45'02"E	88.87'
L64	S58°45'32"W	82.25'	L131	S43°20'40"E	154.53'
L65	S89°20'51"W	43.89'	L132	N80°57'41"E	141.45'
L66	S42°05'45"E	22.02'	L133	S84°41'09"E	94.51'
L67	S51°07'58"E	36.08'			

G & W ENGINEERS, INC.
 • ENGINEERING • SURVEYING • ARCHITECTURE • PLANNING
 205 W. LIVE OAK ST. PORT LAVACA, TEXAS 77979 (361)552-4509
 1801 7th ST., SUITE 260 BAY CITY, TEXAS 77414 (979)323-7100

492.37 ACRE SURVEY
SAMUEL LOVE LEAGUE
ABSTRACT NO. 59
MATAGORDA COUNTY, TEXAS

DRAWN BY: T.E.T.
 CHECKED BY: H.A.D.
 DATE: APRIL 2, 2012
 SCALE: 1" = 700'
 FILE NO.: 6091-001
 JOB NO.: 6091-001
 SHEET NO.: 1 OF 1